

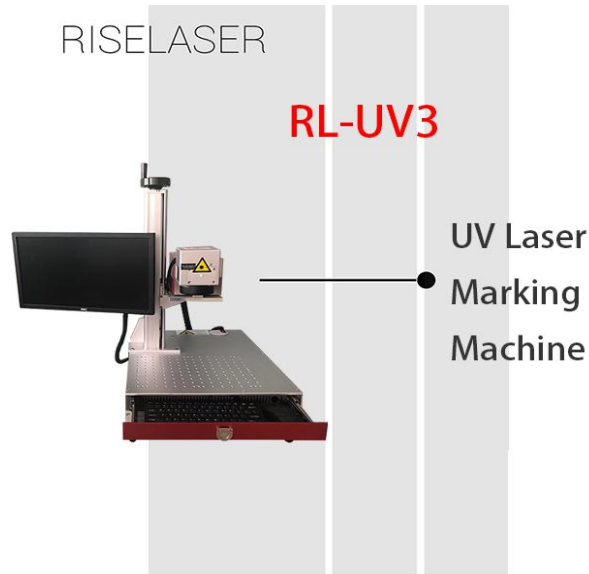


Riselaser

深圳市华升激光科技有限公司

SHENZHEN RISELASER TECHNOLOGY CO., LTD

Portable Desktop UV Laser Marking Machine with Keyboard



Product Introduction

RL-UV3 has a compact structure and is extremely convenient for installation and debugging. The built-in laser diode technology is used to avoid the influence of fiber jitter on the output laser. In addition, the beam quality is excellent enough to ensure the stability and reliability of mass production.

Product Parameter (Specification)

No	Parameter	Details
1	Model	RL-UV 3
2	Laser wavelength	355nm
3	Average power	> 3W@40kHz
4	Pulse Repetition Rate	20kHz-200kHz
5	Pulse Width	< 18ns@ 40kHz
6	Pulse to pulse stability	<3%rms
7	Beam-pointing Stability	25 μ rad
8	Beam Roundness	>90%
9	Beam diameter	0.7 \pm 0.1mm
10	Beam Divergence	<2mrad
11	Ambient temperature	0-40 $^{\circ}$ C
12	Cooling	Air cooling
13	Power consumption	<800W

E-mail: carina@riselaser.com

Website: www.riselaser.com www.shdlaser.com

Address: Building 5, COFCO (Fuan) Robot Intelligent Manufacturing Industrial Park, No. 90 Dayang Road, Fuhai Street, Bao'an District, Shenzhen, China, 518103



Riselaser

深圳市华升激光科技有限公司

SHENZHEN RISELASER TECHNOLOGY CO., LTD

Product Features

1. Cold processing marking: Zero processing heat-affected zone, there will be no thermal effect and no material burning problem.
2. Fast marking speed and high efficiency; the whole machine has the advantages of stable performance and low power consumption.
3. Portable: small size and light weight.
4. Convenient Operation: Convenient data processing with dedicated laser marking software.
5. High processing accuracy: Due to the extremely small focus spot of the ultraviolet laser, marking is more refined, suitable for ultra-fine marking environment.

Applications

UV laser marking machine ink printing is pollution-free, so it has a wide range of applications: flexible PCB board marking and scribing; silicon wafer micro-hole and blind hole processing; LCD liquid crystal glass QR code, glassware surface drilling, marking on the metal surface, plastic buttons, electronic components, etc.



Glass



Glass



Glass



Wood



Wood



Wood



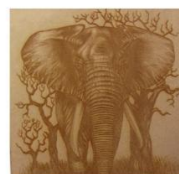
Jeans



Jeans



Towel



Wood



Wood



Wood



Plastic



Plastic



Leather



Wood



Wood



Wood

E-mail: carina@riselaser.com

Website: www.riselaser.com www.shdlaser.com

Address: Building 5, COFCO (Fuan) Robot Intelligent Manufacturing Industrial Park, No. 90 Dayang Road, Fuhai Street, Bao'an District, Shenzhen, China, 518103



深圳市华升激光科技有限公司

SHENZHEN RISELASER TECHNOLOGY CO., LTD

Riselasers
Packaging & Shipping



Certifications



E-mail: carina@riselasers.com

Website: www.riselasers.com www.shdlasers.com

Address: Building 5, COFCO (Fuan) Robot Intelligent Manufacturing Industrial Park, No. 90 Dayang Road, Fuhai Street, Bao'an District, Shenzhen, China, 518103



Riselaser

深圳市华升激光科技有限公司

SHENZHEN RISELASER TECHNOLOGY CO., LTD

FAQ

1.What are the primary products of your company?

Our primary products include laser engraving machine, laser cutting machine, laser marking machine .

2.Where is your laser equipment applied to?

Our laser equipment is applied to textiles, leather, shoes, advertisement, gifts, electronic components, stamp, etc.

3.Which countries are your laser machinery sold to?

Our products are widely exported to Poland, Russia, Ukraine, Korea, Thailand, Egypt, Brazil, Australia, Singapore, Saudi Arabia, Turkey, India, Italy, and other countries.

4.How long is the delivery time?

The products will be delivered to you within three weeks after the order is confirmed.

E-mail: carina@riselaser.com

Website: www.riselaser.com www.shdlaser.com

Address: Building 5, COFCO (Fuan) Robot Intelligent Manufacturing Industrial Park, No. 90 Dayang Road, Fuhai Street, Bao'an District, Shenzhen, China, 518103